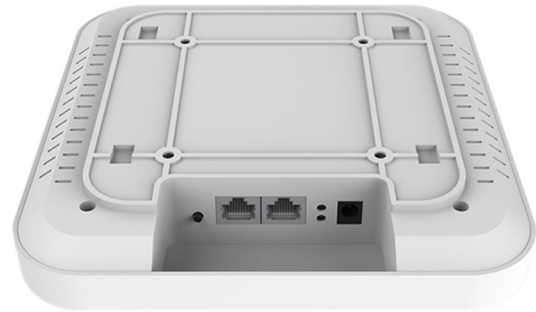


YDS-INAX50Y-H V3.0-072
High-Performance And High-Speed Wi-Fi6 3000M 11ax
Indoor Dual-Band Ceiling Access Point



Front View



Back View

Product Overview

YDS-INAX50Y-H V3.0-072 is a high-performance and high-speed 11ax indoor dual-band ceiling AP. It can provide both 2.4G and 5.8GHz dual-band wireless services, offering access rates of up to 574Mbps for 2.4G and 2402Mbps for 5G.

Features

- It has better transmission quality & higher transmission rates, the concurrent rate of the whole device can reach up to 3000Mbps.
- It adopts the IPQ5018 chip & supports 160Mhz, which greatly expands the user capacity to support 180 users.

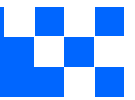
YDS-INAX50Y-H V3.0-072 High-Performance And High-Speed Wi-Fi6 3000M 11ax Indoor Dual-Band Ceiling Access Point

Features

- The heat sink is designed with a buckle structure and treated with a special coating on the surface, which is more ideal for heat dissipation.
- The RF adopts a high-power external FEM for stable performance, wide wireless range, and long-distance transmission.

Product Specification

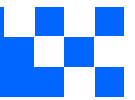
CPU	IPQ5018 +QCN6102
Flash	SPI NOR 8MB SPI NAND 128MB
DDR3	External 512MB*1
2.4G Operating Frequency	2.4GHz~2.484GHz
2.4G WIFI Transfer Protocol	802.11 b / g / n / ac / ax
5G Operating Frequency	5.150GHz ~ 5.825GHz
5G WIFI Transfer Protocol	802.11 a / n / ac / ax
Built-in Antenna 2.4G	2*2.4G Antenna, Gain Per Root: 4dBi
Built-in Antenna 5G	2*5.8G Antenna, Gain Per Root: 4dBi



YDS-INAX50Y-H V3.0-072 High-Performance And High-Speed Wi-Fi6 3000M 11ax Indoor Dual-Band Ceiling Access Point

Product Specification

Max Speed	2.4G Offers A Max Access Rate of 574Mbps and 5G Offers A Max Access Rate of 2402Mbps				
RF @25°C±2Db 2.4G	802.11b	11 M	24 ± 2 dBm	1 M	24 ± 2 dBm
	802.11g	54 M	21 ± 2 dBm	6 M	23 ± 2 dBm
	802.11n HT 20	MCS7	20 ± 2 dBm	MCS0	22 ± 2 dBm
	802.11n HT 40	MCS7	20 ± 2 dBm	MCS0	22 ± 2 dBm
	802.11ax HE20	MCS 11	18 ± 2 dBm	MCS0	22 ± 2 dBm
	802.11ax HE40	MCS 11	18 ± 2 dBm	MCS0	22 ± 2 dBm
RF @25°C±2dB 5.8G	802.11a	54 M	19 ± 2 dBm	6 M	22 ± 2 dBm
	802.11n HT 20	MCS7	18 ± 2 dBm	MCS0	21 ± 2 dBm
	802.11n HT 40	MCS7	18 ± 2 dBm	MCS0	21 ± 2 dBm
	802.11ac VHT20	MCS9	17 ± 2 dBm	MCS0	21 ± 2 dBm
	802.11ac VHT40	MCS9	17 ± 2 dBm	MCS0	21 ± 2 dBm
	802.11ac VHT80	MCS9	17 ± 2 dBm	MCS0	21 ± 2 dBm
	802.11ax HE20	MCS 11	17 ± 2 dBm	MCS0	21 ± 2 dBm
	802.11ax HE40	MCS 11	17 ± 2 dBm	MCS0	21 ± 2 dBm
	802.11ax HE80	MCS 11	17 ± 2 dBm	MCS0	21 ± 2 dBm



YDS-INAX50Y-H V3.0-072 High-Performance And High-Speed Wi-Fi6 3000M 11ax Indoor Dual-Band Ceiling Access Point

Product Specification

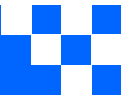
RF @25°C±2dB 5.8G	802.11ax HE160	MCS 11	17 ± 2 dBm	MCS0	21 ± 2 dBm
Sensitivity 2.4G	802.11b	11 M	-85 dBm	1M	-90 dBm
	802.11g	54 M	-72 dBm	6M	-90 dBm
	802.11n HT 20	MCS7	-70 dBm	MCS0	-87 dBm
	802.11n HT 40	MCS7	-68 dBm	MCS0	-85 dBm
	802.11ax HE20	MCS 11	-60 dBm	MCS0	-83 dBm
	802.11ax HE40	MCS 11	-56 dBm	MCS0	-83 dBm
Sensitivity 5.8G	802.11a	54 M	-72 dBm	6M	-92 dBm
	802.11n HT 20	MCS7	-70 dBm	MCS0	-90 dBm
	802.11n HT 40	MCS7	-68 dBm	MCS0	-88 dBm
	802.11ac VHT20	MCS8	-70 dBm	MCS0	-88 dBm
	802.11ac VHT40	MCS9	-68 dBm	MCS0	-88 dBm
	802.11ac VHT80	MCS9	-58 dBm	MCS0	-85 dBm
	802.11ax HE20	MCS 11	-62 dBm	MCS0	-88 dBm
	802.11ax HE40	MCS 11	-58 dBm	MCS0	-86 dBm
	802.11ax HE80	MCS 11	-55 dBm	MCS0	-84 dBm
	802.11ax HE160	MCS 11	-51 dBm	MCS0	-82 dBm



YDS-INAX50Y-H V3.0-072 High-Performance And High-Speed Wi-Fi6 3000M 11ax Indoor Dual-Band Ceiling Access Point

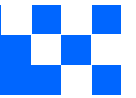
Product Specification

2.4G EVM	802.11b: ≤ -10 dB ; 802.11g: ≤ -25 dB ; 802.11n: ≤ -28 dB; 802.11ax: ≤ -35 dB
5G EVM	802.11a: ≤ -25 dB ; 802.11n: ≤ -28 dB ; 802.11ac: ≤ -32 dB; 802.11ax: ≤ -35 dB
ppm	± 20 ppm
WAN	1 * 10/100/1000/Adaptive WAN Interface, Support POE 48V Power Supply
Console	1
External Key	Reset (Restore the factory default configuration by pressing for 6-10 seconds.)
Status Indicator	WAN Port Light, LAN Port Light, Tricolour Light (Three Different Colors Represent: sys-Red, 2.4G-Green, 5.8G-Blue)
Power Supply	DC2.0 12V 1.5A, PoE 802.3at
Maximum Power Consumption	< 16 W
Product Size	186mm \times 186mm \times 37mm
Weight	0.55kg
Operating Condition	Operating Temperature: -10°C to 55°C Storage Temperature: -40°C to 70°C Humidity: 5%~95%(non-condensed)
ESD	Air Discharge ± 8 K, Contact Discharge ± 4 K
Surge	Common Mode 2K, Differential Mode 1K



YDS-INAX50Y-H V3.0-072
High-Performance And High-Speed Wi-Fi6 3000M 11ax
Indoor Dual-Band Ceiling Access Point





YDS-INAX50Y-H V3.0-072
High-Performance And High-Speed Wi-Fi6 3000M 11ax
Indoor Dual-Band Ceiling Access Point

